

INGENIERIA

MATMOR C.A.

RIF: J-30523304-7



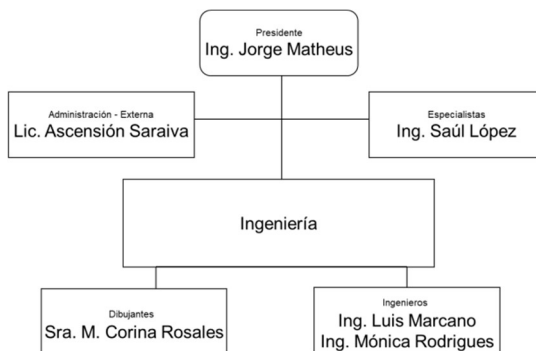
COMPANY PORTAFOLIO
August 2023

Ave . Fco. de Miranda con calle Guanchez, Edf. Valencia I, Piso 1, Ofc. 2, Los Dos Caminos. Caracas 1071,
Direct: +58(212)525-8295, +58(414)283-6229
E-mail: ingmatmor@gmail.com, <http://www.matmor.dynu.com>

COMPANY INTRODUCTION

Ingeniería MATMOR, C.A. (ENGINEERING MATMOR, C.A.) Is a Venezuelan consulting company made up of a group of qualified professionals dedicated to the development of consulting activities in engineering, and inspection.

It is founded in 1998, with a group of engineers who have been working together for more than 40 years, so their accelerated the formation of teams of specialists with experience in Electrical Engineering, Systems and Electrical Installations Construction.



The mission of MATMOR, C.A. is: To provide services with a high level of commitment and high quality in the areas of Engineering oriented to the development of the Venezuelan Industry

The Company's current infrastructure allows it to acquire professional commitments of around 5,000 man-hours per year with payroll personnel, and this number can be increased by considering contract personnel and strategic partnerships with the Company.

COMPANY ORGANIZATION

The Company is formed at the highest level by the SHAREHOLDERS ASSEMBLY, which delegates to the BOARD OF DIRECTORS the management of the company.

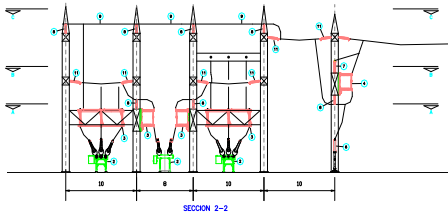
The BOARD OF DIRECTORS, in order to comply with the mandate of the SHAREHOLDERS ASSEMBLY, is supported by the Company's Management, made up of the PRESIDENCY, DIRECTORS and the Executive Committee of Managers.

Jorge Matheus, who has more than 39 years of experience in the area of engineering and project management, is currently President of the company.

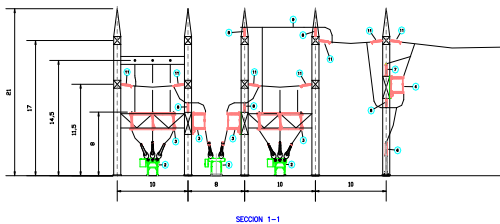
Among its main functions, the Administration has to plan and develop business management, to dictate the rules

and procedures that regulate the company and to coordinate the activities of the different Management. In this way, all the activities carried out are carried out in a harmonious and concurrent way, in order to maximize resources, avoiding capital losses, time and personal efforts.

The modality established within the Company is to create dedicated units or PROJECT MANAGERs, which are configured according to each particular project and these allow increasing the efficiency in the execution of the works.



PROJECT MANAGEMENT (PM) is under the responsibility of supervising the activities assigned to the working groups in order to guarantee the fulfillment of the pre-established goals of quality, efficiency and time to our clients.



In order to achieve these objectives, PMs undertake detailed planning of the human and material resources they require, controlling the allocation of resources to each subproject or activity, detecting possible deviations in order to make the necessary adjustments and at the same time supervising the Activities assigned to the work groups are performed within the predefined parameters. On the other hand, the matrix participation of the resources according to the requirements allows a flexible, dynamic and adaptable organization.

PMs report administratively to one of the management of the company. These areas management are a reflection of the specialization groups mentioned above

- . ENGINEERING DEPARTMENT
- . COMPUTER TECHNOLOGY DEPARTMENT.

The company counts within its organization with a group of professionals, the SPECIALISTS; Their high level of professionalism and experience allow them to provide timely advice to Project Management in problems of special complexity, in order to ensure the high quality of the studies or projects carried out, as well as the feasibility of Immediate application to the solution of the needs of the contracting companies.

The functions of ADMINISTRATION AND LEGAL

FINANCIAL ADVICE meet the objectives of its area of competence within the overall structure of the Company.

ENGINEERING DEPARTMENT

Engineering department provides services to all types of electric service companies, industrial plants, oil and private facilities.

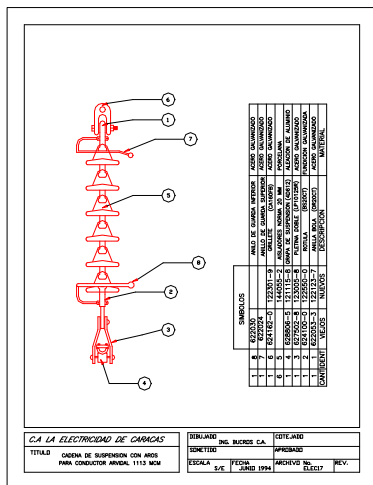
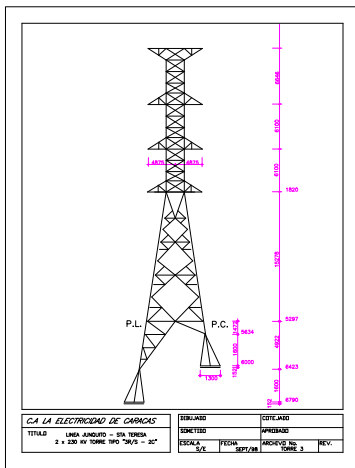
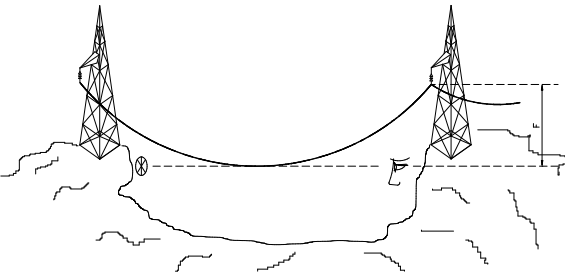
The Department of Electrical Engineering is one of the foundations of the company, has a wide experience in projects executed outside the company, covering all areas of electrical engineering such as:

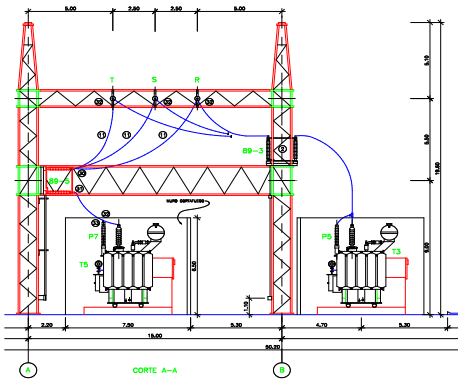
- Power Systems and Distribution Systems.
- High and low voltage substations
- High and low voltage lines
- Distribution networks and industrial plants.
- Overcurrent and surge protection.
- Supervision of construction work.

In the areas indicated above the experience of the department includes: studies of Planning, designs, projects, specifications, and inspection of works. Additionally, we have experience in the construction of subtransmission and distribution lines and substations.

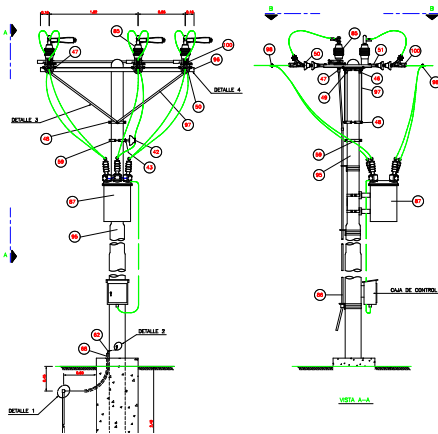
The following projects have been developed:

- Factibility Study and Design a Muncipal distribution company (2023)
- Asistance for the lawyer staff in order to adquire 2 distribution companies of about 1000 and 400 MW each. (2022 -2023)
- Projects for Commencial store for about 2.6, 1.5 MW, 2 MW, 1 MW and 0.75 MW each. Also a supermarket Store 0.3 MW.
- Spatial Load allocation taking into account the forecas load, solar panel generation and Electric vehicle load. For a City of 300 MW (2020). With Siemens PTI
- Estimated Inventory and Reproduction Cost for a 1000 MW Distribution utility.(2019 - 2020). With Siemens PTI

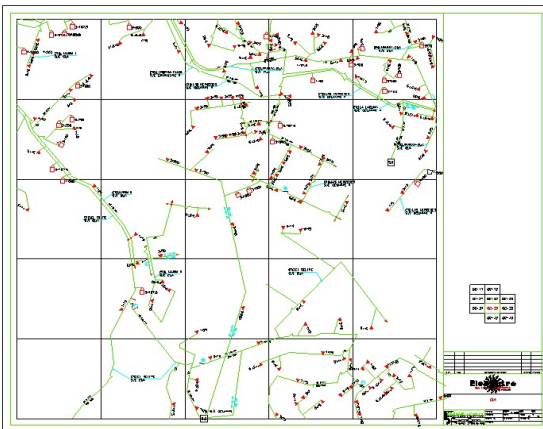




115/13.8 KV Substation lateral view



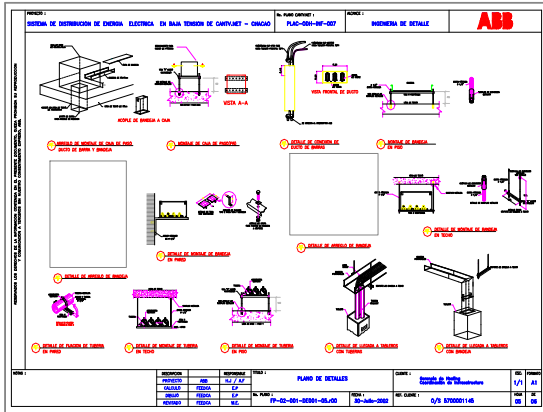
Recloser detailed pole installation



Inventory and mapping distribution Network

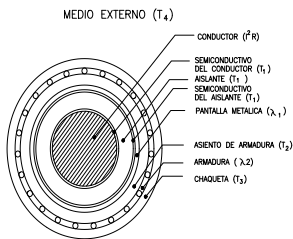
- Spatial Load Forecast for a utility company with about 5 million customers, 1005 substations, (2018-2019) – with Siemens PTI
- KOSOVO Master Plan revision and recommendations for Losses reduction as Siemens subcontractor. (2017) With Siemens PTI
- Revision of the Project for the acquisition of the Distribution Networks of MANTECA, RIPON and ESCALON. California, USA (2017-2016-2015)
- Huston Park Horse Race, electric distribution system analysis and recommendations. (2016)
- La Trinidad Commercial Center, for Group TOTAL, 3 MVA, Revision (2021)
- Buenaventura Commercial Center, for Group TOTAL, 6 MVA, (2020-2021)
- Distribution system planning, for Ciudad Bolívar City. Map updates, immediately projects and future projects foreseen to take the forecast demand load.
- Update of the San Diego de Cabrutica Project Distribution system (2011)
- Distribution system remodeling Projects of the Districts of San Diego de Cabrutica, Mapire and Zuata to the South of the Anzoategui State (2010)
- Revision of the Project for the acquisition of the Distribution Networks of MANTECA, RIPON and ESCALON. California, USA (2013-2014)
- Revision of the Project for the acquisition of the Distribution Networks of MANTECA, RIPON and ESCALON. California, USA (2008)
- Line to 13.8 kV for new feeding to Coca-Cola Femsa de Venezuela (Barcelona) (2009)
- Electrical connection in 34.5 kV S / E Las Parchitas - S / E Polar and extension of S / E in 34.5 kV, 115 / 34.5 kV and 115 / 13.8 kV, for Polar Oriente
- Study to improve the continuity of the electric service of the Cocacola-Femsa East Plant Own generation study (2007-2008)
- Management of equipment procurement and contracting of works for the S / E Barcelona Extension Project 115 / 13.8 kV. (2007-2008)

- Basic and detailed engineering of the Expansion of the S / E Barcelona with the incorporation of a new power transformer 115 / 13.8 kV of 10 MVA for the company SOLTUCA (2007-2008)
- Basic engineering for the S / E Agla 115 / 34.5 kV of PDVSA GAS for Thronson Internacional de Venezuela, C.A.♣ (Tivenca) 2007.



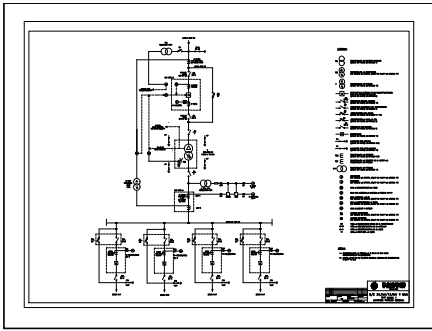
Detailed installation in CANTV.NET building

- Elaboration of the engineering for diverse projects in the aerial of distribution in all the metropolitan area for the Electricity of Caracas (2005-2007)
- Collection and digitization of the MV, LV and PL networks and subscriber survey for the commercial office Maracay IV, Maracay, Edo. Aragua, through the strategic partnership with the company OA Asociados, for ELECENETRO. (2004-2005)
- Distribution Systems Separation, border determination and Final Inventory revision, for Cities of DAVIS, Woodland y West Sacramento, Yolo County, for (SMUD), California USA., (2005) 11.000 \$

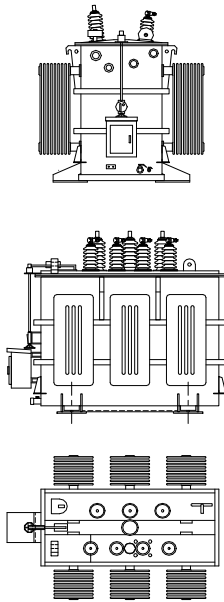


Transversal solid cable insulation for 115 kV & 230 kV.

- Severance Issues and Final Inventory, for Manteca, Escalon y Ripon, in South San Joaquin County, for, Siemens PTI 11.000 \$
- Technical Losses regression analysis for primary feeder, for Siemens PTI, 2006 4.500 \$
- PADEE – SINCAL conversion example for Siemens PTI, (2006) 1.600 \$
- Study of route and Design of the Line to 115 KV Barinas I - Barinas II to S / E Barinas IV, for CADAFE, in association with DARIANCA (2002-2003)
- Survey and Analysis of High and Low Voltage Networks for the city of Charallave, Edo. Miranda, through the strategic partnership with the company OA Asociados, for ELECENETRO. (2002-2003)
- Survey and Analysis of the Present Networks the City of Puerto Ayacucho, through the strategic association with the company OA Asociados for ELECENETRO (2002)
- Expanded Basic Engineering of the Radial Substation I and II of SEMDA, Edo. Monagas, Para O.A. Associates (2005)



One line diagram S/S 34.5/13.8 KV

Transformador de Potencia 34.5/13.8 KV
5 MVA

- Study and Coordination of Isolation for the distribution networks of ELEBOL, in Ciudad Bolívar. (2001)
- Study and Coordination of the Protections in the feeders of the City Calabozo, in strategic partnership with the company OA Asociados for ELECENTRO
- Planning of the Distribution Networks, Expansion of Distribution Substations and elaboration of the Investment Plans, for the Guacara-San Joaquin-Mariara Hub, Edo. Carabobo, through the strategic partnership with the company OA Asociados for Eleoccidente.
- Planning of the Distribution Networks, Expansion of Distribution Substations and elaboration of the Investment Plans, for the Central Axis Tacarigua - Güigüe, Edo. Carabobo through the strategic partnership with the company OA Asociados for Eleoccidente.
- Short-term planning of the Distribution Networks, and elaboration of the Investment Plans, for the Las Mercedes Valle la Pascua area through the strategic partnership with the company OA Asociados for Eleoriente. Coordination of main and supplementary protections.
- Reconstruction Project of the Line in 30 kV, Circuit Guaira 5 (E. De C.). Study of Route and Project in association with Xponencial Engineering.
- Relocation of the 230 KV Line associated with Tocoa Plant and E. Reef Plant in association with Xponencial Ingeniería.
- Location of equipment, earth mesh, shielding system and external lighting system, of the S / E Guanta II 230/115 kv and S / E Parchita 115 / 6.9 kV in association with AYLICA, C.A. For CADAFE and Pequiven respectively.
- Study of route and design of the line 2x69 kV S / E Elegua - S / E Casarapa of the E. of C. in association with Xponencial.
- Study of the grounding and shielding system against atmospheric discharges of Aserradero 2000 of the Andean group, in association with LG.Ingeniería, C.A.

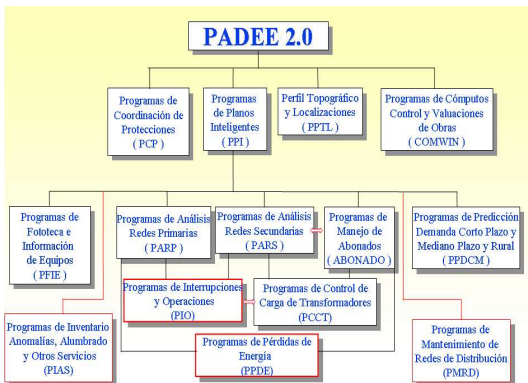
- Study of the earthing and shielding system against atmospheric discharges of the OXINOVA of the Andean group, in association with LG. Ingeniería, C.A.
- Lines in 34.5 Kv and 115 Kv for the feeding of the Fajardo Pumping System, for Hidrocapital Sistema Fajardo, through the company IDFACA and GAUFF Engineering
- Basic and detailed engineering of substations 34.5 / 13.8 Kv of 1x2.5, 1x5, 1x2.5 + 1x5, and 2x5 MVA for Turboven, through O.A. Associates.
- Coordination of Protections for the rural circuits of the substations: Tronconal, El Rincon, Guaripa, Guara I, Casanay and Yaguaraparo for ELEORIENTE.
- LV MAPs Drawing Networks of Barrio la Mora, for ELECENRO.
- Study of Route and Project of the Line to 34.5 kV Power Station Cerro Curiapo Microwave, for EDELCA, associated with S & J Services
- Analysis of the Present System and Immediate Recommendations for the Distribution System of the City of Maturín, associated with OA, Associates, for SEMDA.

COMPUTER TECHNOLOGY DEPARTMENT

Computer department is the unit responsible for providing our clients with specialized services not commonly available in companies dedicated to Engineering or Management.

The projects carried out are:

- Installation of the Server and services to BYA Foundations.
- Review and Inspection of the Electrical System and UPS of Fundaprol Computation Center (2010)
- Electronic Correspondence System, includes the reception, distribution, storage and mailing of correspondence. (\$ 1,000.00)
- Trademark and Patent System for the Bollet & Terrero



Company (60,000.00 \$)

- Review and recommendations to UPS failures in TOTAL's store group.

Among the systems that have been developed by the staff of MATMOR are:

Windows Control and Advancement Package (COMWIN)

- . Unit Price Analysis.
- . Work Computations
- . Valuations
- . Price Acknowledgments, etc.

This system is being used by CADAPE and its subsidiaries, together with the contractors in order to homogenize the calculations and presentation of projects and execution of electrical works. Currently this program works in WINDOWS environment and is linked directly to the plans of the networks made in AUTOCAD, making it much more versatile.

- Program Analysis for Distribution Power Networks (P.A.D.E.E.). Please visit our web page <http://padeepro.com/padeeing.html> for more details.

The public utility CORPOELEC has acquired the Corporative licenses for all the country (50.000 US\$)

We also have extensive experience in the acquisition, control and maintenance of the equipment, software and local networks required by the company, as well as support for the use and management of commercial packages based on WINDOWS, such as:

- AUTOCAD, BRISCAD, ARCMAP, AUTOLISP, Microstation. Word Processors (Word) Project Control Calculation Sheets, Database, FOXPRO for Windows, Visual Foxpro, Visual Basic Languages (FORTRAN and Visual Fortran, Basic, etc. ARCGIS - ARCMAP

In general it is offered:

- Administrative packages, attendance control, project Costs

- Web Pages, Intranet, Extranet, Internal and External Mail Server (html5, CSS, Javascript, Responsible design)
- Development of Own Technical Programs Planning / Evaluation Systems. of Projects

In the HARDWARE area we have:

- Computer Center facilities.
- UPS installations and specifications in computer centers
- Specifications, procurement and assembly of computers for workstations and servers
- Specifications, procurement, installation and commissioning of Networks for Micros (Windows)
- Installation and commissioning of commercial PC software

COMPANY WORK FORCE

The workforce of the company is represented by a group of professionals, technicians and administrative staff that works under the regime of:

- Payroll
- Hired

At present, the company counts, in payroll personnel, with 5,000 H-H annually. However, it is significant to note that the company has significantly more capacity because it has permanent contract specialists and the basic infrastructure to manage these additional hours. On the other hand MATMOR, C.A. Develops projects under the form of partnership with other consulting companies, which increases the capacity of the planned Hours-Man and the area of competence, allowing us to provide our clients with an integral service.

According to established commitments and previous experiences, MATMOR is able to meet commitments up to a total of 25,000 H-H per year.

Table I shows the name, title, year of graduation and specialization of the direct staff of MATMOR. Table II shows the same information for the specialized assistance personnel, as well as their area of competence.

Table I
TECHNICAL STAFF MATMOR BASE
Name and Specialty

Jorge E. Matheus L. Electrical Engineer 1980	
Miguel González Electrical Engineer 2009	Oswaldo Lezama Electrical Engineer 1983
Luis Marcano Electrical Engineer 2017	Luis Castillo Electrical Technicians
Mónica Rodríguez Electrical Engineer 2018	Eduardo Hernández Electrical Technicians
Corina Rosales CAD Drawings Specialist	
TSU Daniela Peña Electrical Technicians	

Table II.
SPECIALIZED TECHNICAL STAFF MATMOR
Name and Specialty

Saúl López Electrical Engineer 1976
Milton Lopez B Mechanical Engineer 1974

RESOURCE AVAILABILITY

MATMOR, C.A. Was started in 1998 as an Engineering and Construction Company as indicated above. Currently the company has a capital of 75 thousand US\$ and is increasing it to 150 thousand with the profits of the exercises. Among the facilities available in MATMOR, C.A. for projects execution, it has a physical area of 100 m² located in CARACAS with office equipment arranged in a harmonious way in a pleasant environment for the staff. The company has rustic vehicles, measuring instruments and construction equipment for the facilities. In addition, it has modern computer equipment equipped with the latest engineering and project control programs, which guarantees the quality of the final product.

AVAILABLE EQUIPMENTS

Description	Quantity
PCs with Windows and capacity CAD programs	5
Plotter	1
Printers	3
Digital Cameras	1
FAX	1
Motorcycles	1
Amperimeters	1
Odometers	3
Googles	1
Wrench for tanquillas	1
Portable GPS	1
Calculators	5
Isolated Stick	1
Measuring gauge	1
Security Cones	4
lanterns	2
Helmets	5
Low voltage gloves	1
First aid kit	3
Fire extinguishers	3
Isolated Stair 8 meters	1
50 meter tape measure	1
3 meter tape measure	1
Electric drill	1
Big Hammers	1
Hammers	1
Digital Theodolite	1

Likewise the field staff maintains the necessary safety equipment, such as: Helmets, visors, boots, eyes protection, vests, extinguishers, repellents, fire resistant clothes, etc.

Contact Person:

Jorge Matheus +58(414)283-6229 (0414)319-9769

E-Mail: ingmatmor@gmail.com

Phone Direct: +58(212)525-8295

<http://matmor.dynu.com/>